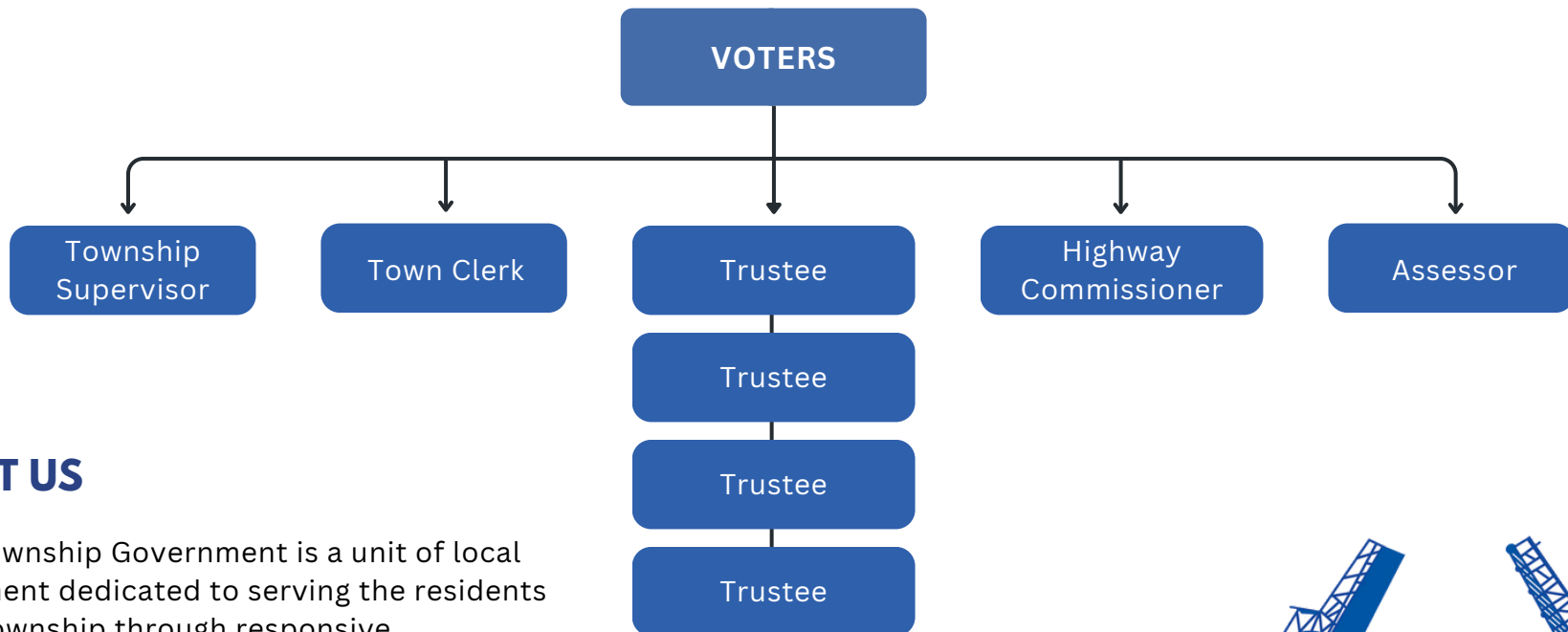


# JOLIET TOWNSHIP ORGANIZATIONAL CHART

## GENERAL OVERVIEW



### ABOUT US

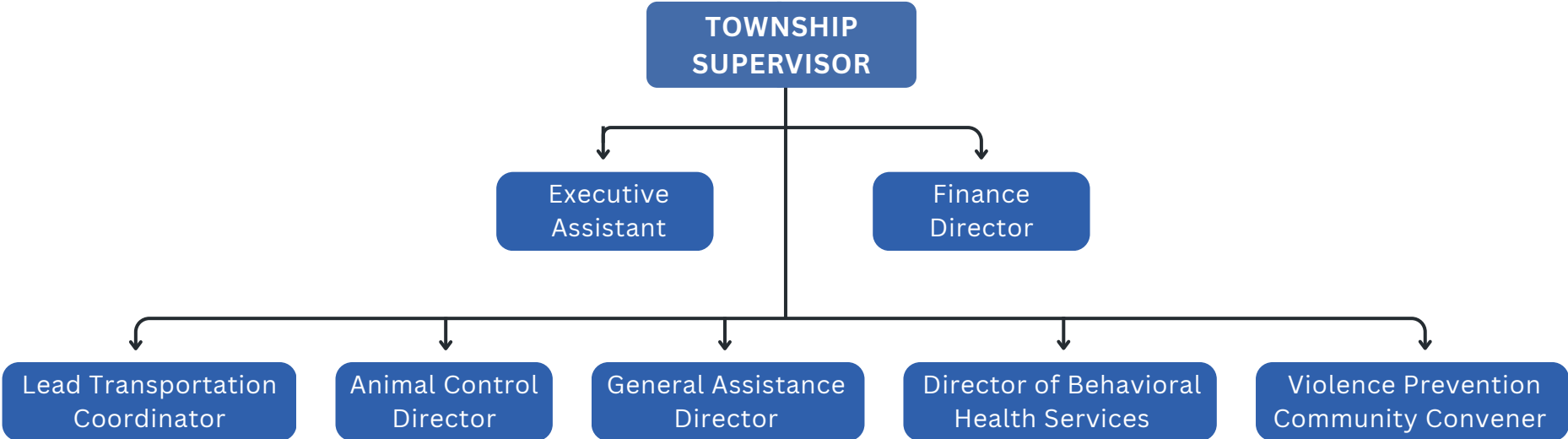
Joliet Township Government is a unit of local government dedicated to serving the residents of the Township through responsive, transparent, and community-focused services. Through its elected officials and departments, the Township provides essential programs including general assistance, property assessment, road district services, senior and youth services, and community support initiatives. Joliet Township is committed to responsible governance, fiscal accountability, and delivering services that enhance the quality of life for those who live and work within the Township.



Joliet Township Government Full-Time Employees: **21**  
Joliet Township Government Part-Time Employees: **20**  
Joliet Township Assessor Full-Time Employees: **7**  
Joliet Township Road District Full-Time Employees: **9**  
Main Phone: **(815) 726-4781**

# JOLIET TOWNSHIP ORGANIZATIONAL CHART

## OFFICE OF THE SUPERVISOR



### DEPARTMENT INFORMATION

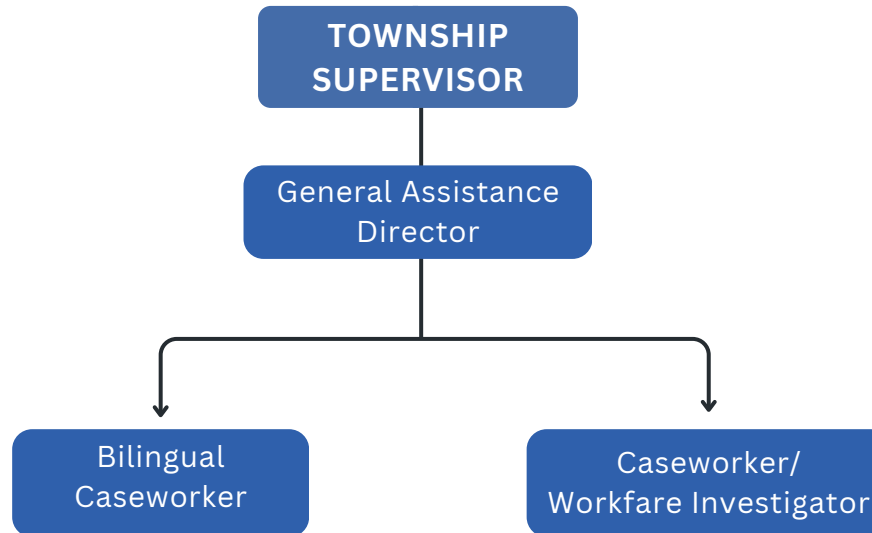
The Township Supervisor is the chief executive officer of Joliet Township Government. The Supervisor serves as Chair of the Township Board, oversees General Assistance, and is responsible for the custody and reporting of township funds. As treasurer of all township funds and ex officio treasurer of the Road and Bridge Fund, the Supervisor ensures fiscal accountability and compliance with state law while overseeing key service departments that support the community.

Total Number of Full-Time Employees: 19

Last Updated: May 19, 2026

# JOLIET TOWNSHIP ORGANIZATIONAL CHART

## GENERAL ASSISTANCE DEPARTMENT



### DEPARTMENT INFORMATION

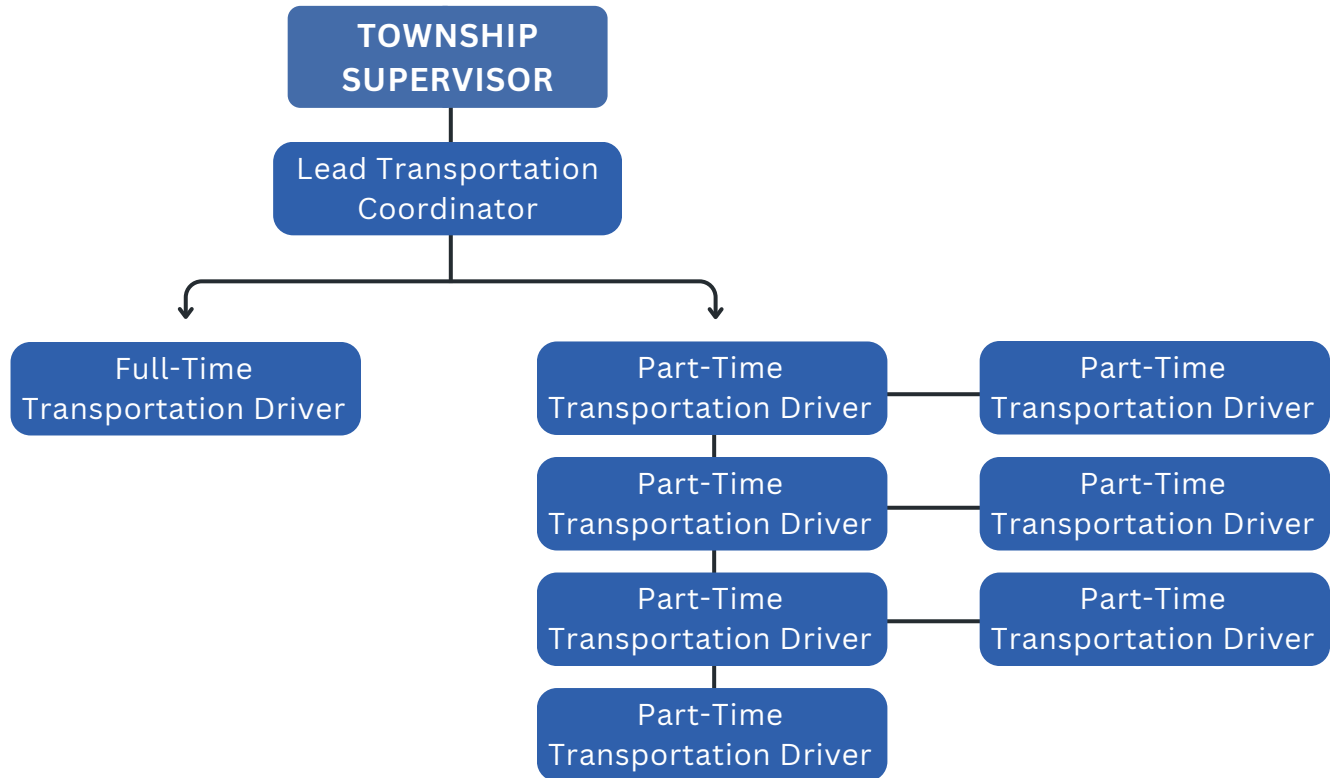
The Joliet Township General Assistance Program provides temporary financial support to eligible residents who lack sufficient income to meet basic needs. Assistance may include help with rent, utilities, food, and essential household expenses. The Township also offers Emergency Assistance for residents facing immediate, life-threatening situations, along with case management, workfare support, and referrals to community resources to promote long-term stability.

Total Number of Full-Time Employees: **3**

Last Updated: March 17, 2026

# JOLIET TOWNSHIP ORGANIZATIONAL CHART

## TRANSPORTATION DEPARTMENT



### DEPARTMENT INFORMATION

The Joliet Township Transportation Department provides safe, reliable rides for seniors, individuals with disabilities, and partner agency clients. Transportation is available for medical appointments, pharmacies, and essential services within Joliet Township and limited surrounding areas. Through partnerships with local agencies, the program helps reduce transportation barriers and ensures residents can access critical care and community resources.

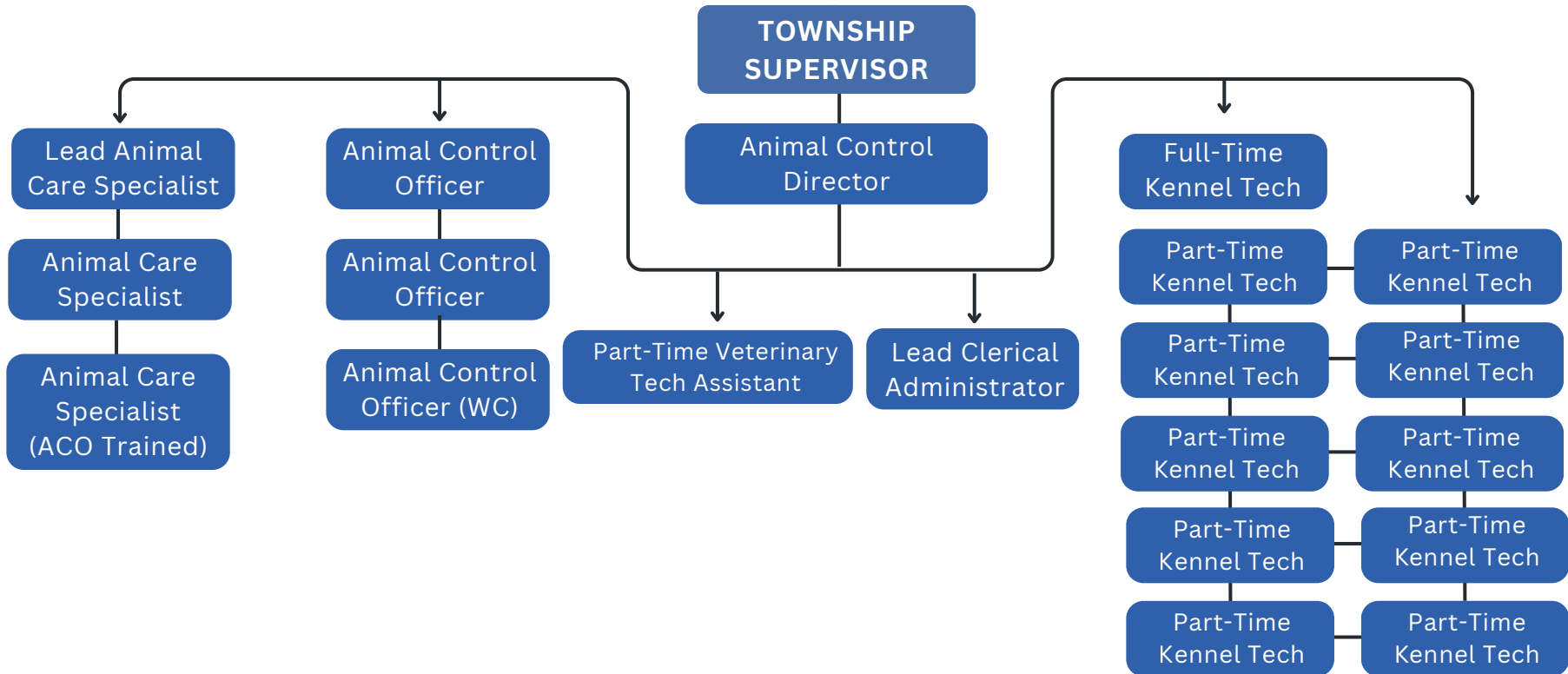
Total Number of Full-Time Employees: **2**

Total Number of Part-Time Employees: **7**

Last Updated: March 17, 2026

# JOLIET TOWNSHIP ORGANIZATIONAL CHART

## ANIMAL CONTROL



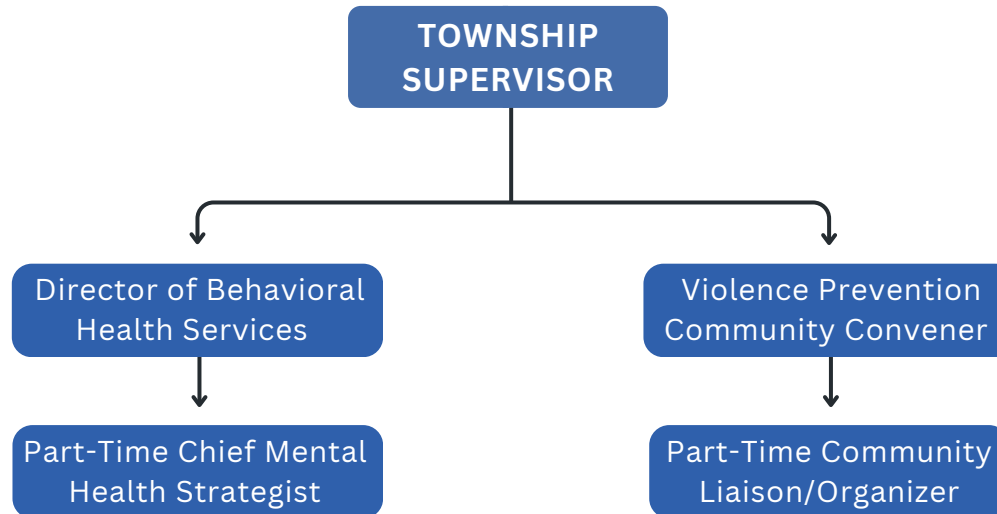
### DEPARTMENT INFORMATION

Joliet Township Animal Control protects public safety while promoting the humane treatment of animals. The department responds to calls involving stray, lost, or abused animals, enforces local animal control ordinances, and provides shelter and adoption services for dogs and cats. Through intergovernmental partnerships and community programs, Animal Control works to reunite pets with owners, support responsible pet ownership, and reduce animal overpopulation.

Total Number of Full-Time Employees: **9**  
 Total Number of Part-Time Employees: **11**

# JOLIET TOWNSHIP ORGANIZATIONAL CHART

## COMMUNITY VIOLENCE INTERVENTION



### DEPARTMENT INFORMATION

Joliet Township Government's Community Violence Intervention (CVI) Initiative works to prevent and reduce violence through coordinated, community-based strategies. The initiative addresses the root causes of violence by partnering with local agencies to provide trauma-informed behavioral health services, firearm violence prevention efforts, data-driven planning, and support for individuals and families most impacted by violence.

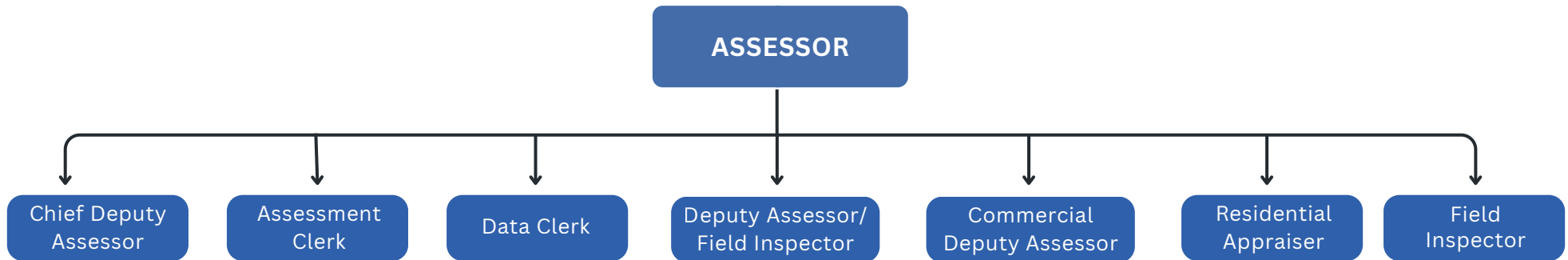
Total Number of Full-Time Employees: **2**

Total Number of Part-Time Employees: **2**

Last Updated: March 17, 2026

# JOLIET TOWNSHIP ORGANIZATIONAL CHART

## OFFICE OF THE ASSESSOR



### DEPARTMENT INFORMATION

The Township Assessor is an elected official responsible for determining the fair and equitable value of all taxable property within the township for assessment purposes. The Assessor does not calculate property tax rates, issue tax bills, or collect property taxes. Instead, the Assessor ensures that property values are assessed uniformly and in accordance with state law, forming the basis upon which property taxes are later calculated by other taxing authorities.

Total Number of Full-Time Employees: **7**

Last Updated: March 17, 2026

# JOLIET TOWNSHIP ORGANIZATIONAL CHART

# OFFICE OF THE TOWN CLERK



CLERK

## DEPARTMENT INFORMATION

The Town Clerk is an elected official responsible for maintaining the official records of township government. The Clerk does not establish policy, set tax rates, or manage daily operations. Instead, the Clerk attends all Township Board meetings, records minutes, maintains official documents, and certifies the township's tax levy in accordance with state law, ensuring accurate records and proper funding for township operations and services. The Town Clerk also acts as the Road District Clerk.

Last Updated: March 17, 2026